

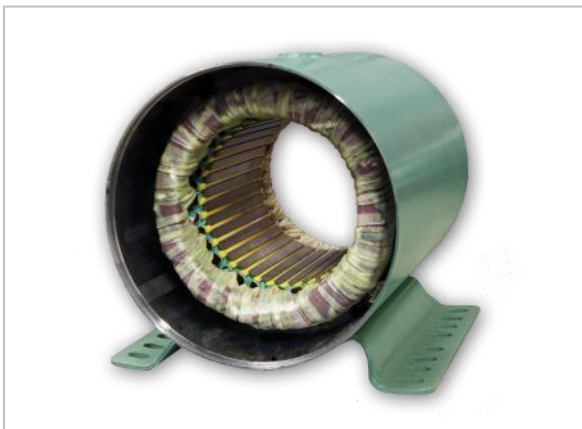


NEW ROLLED STEEL 180T/C FRAME MOTORS



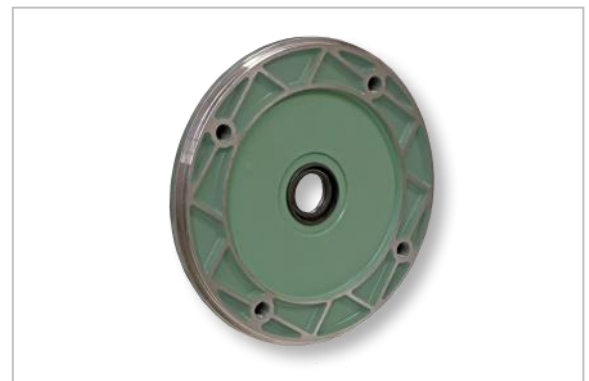
- Lightweight, sturdy rolled steel construction - great for HVAC applications
- Dual 182/184T frame heavy duty welded base
- Unique design easily converts to F2 position (maintains dual base!)
- Fully gasketed conduit box and cover

- C Flange with base available for pump, gear reducer and general machinery applications
- 6306 bearings both drive and non-drive end
- Epoxy powder coat paint



- *Use of a closed-loop vector drive allows extended speed range for CT and VT applications
- Class F with Class B temperature rise

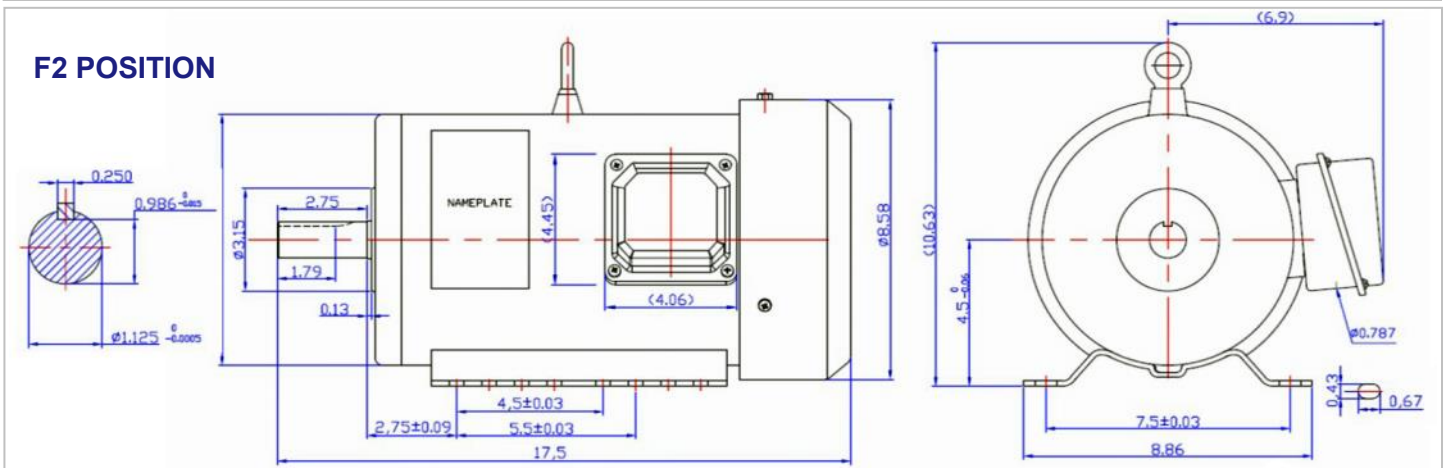
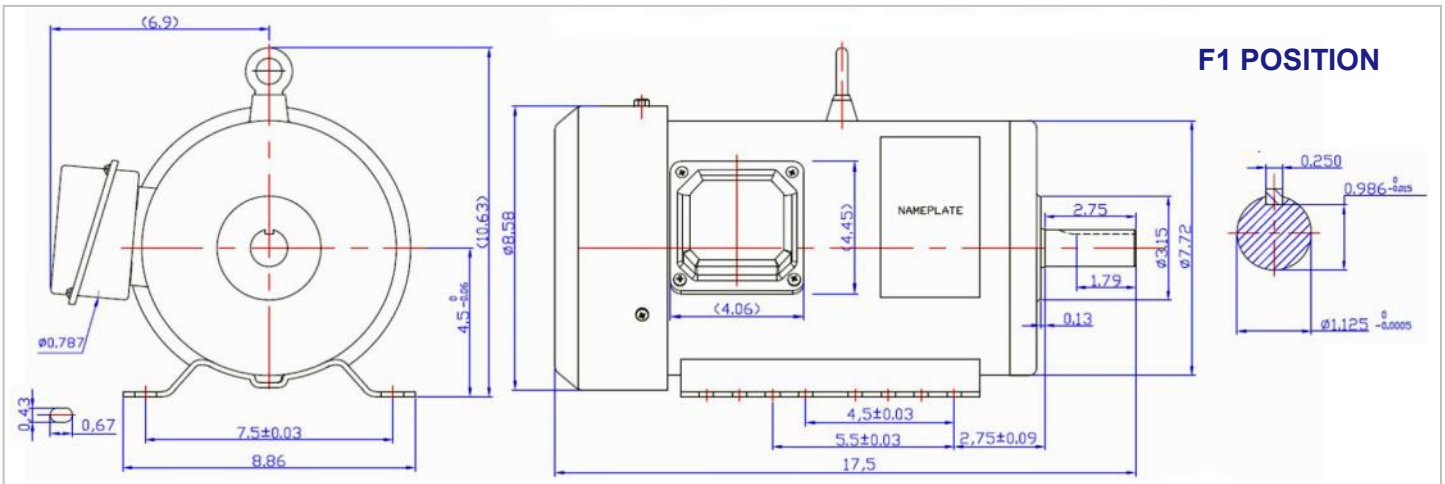
- Double lip seal on both drive end and non drive end.
- Foot mount motors easily convert to C face (correct through bolt length)



See overleaf for dimension drawings and other important information



NEW ROLLED STEEL 180T/C FRAME MOTORS DIMENSIONS



IND NOS.	HP	VOLTS	AMPS	EFF. %	PF	BDT - % FLT	"C" DIM. Inches	WGT lbs
TC34, TC34C	3	575/3/60	3.2	89.5	0.76	300	17.5	77
TU34, TU34C	3	208-230/460/3/60	8.08/4.04	89.5	0.76	300	17.5	77
TC54, TC54C	5	575/3/60	5.2	89.5	0.76	300	17.5	84.5
TU54, TU54C	5	208-230/460/3/60	13.0/6.5	89.5	0.76	300	17.5	84.5

Package with AGI NEMA Cast Iron Reducers, Stearns 180TC Coupler Brakes, Invertek VFD's



CONTACT AG-I MOTORTEC FOR PRICING AND DELIVERY INFORMATION

www.ag-industrie.com

PH. 519-941-6832

Info@agimortec.com